

Empowering girls through travel



TOURS  
FOR GIRLS

GIRL  
TRAVEL  
TOURS







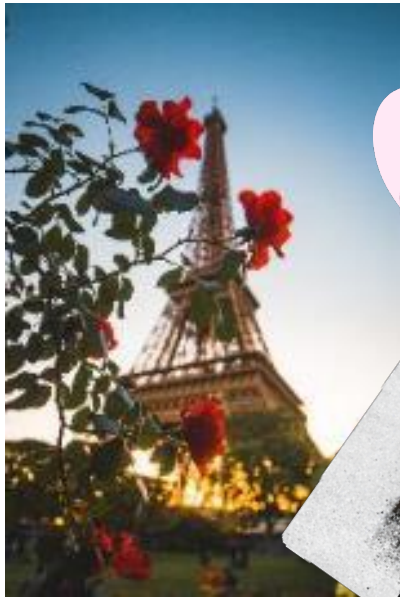
**Girls who travel the world,  
become the women who  
change it.**

**People who travel the world  
become more open minded  
and global citizens.**



# What we'll cover

- 1 Impact of travel
- 2 My travel Partner: EF Tours
- 3 Tour and itinerary
- 4 What's included
- 5 Making it happen
- 6 How to enroll





# Housekeeping

## A few action items

- Please silence your phones
- Put yourself on mute if you are not
- Q/A at the end
- About 45-minute meeting
- Enrollment to follow



GIRL  
TRAVEL  
TOURS





**My name is:**

**Marah Walsh**

- Experienced Group Leader
- Girl Scout Leader and Events Coordinator
- Travel Experience
  - Traveling Internationally since 1985
  - Leading tours for girls, adults and families
  - Trainer for new Group Leaders



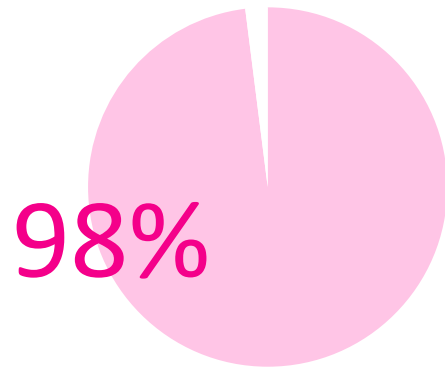


# What Travel Does for People



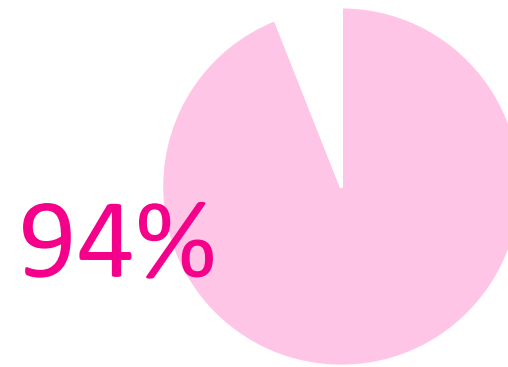


## Cultural Competence



of girls better understand diversity and embrace different cultures.

## Personal Growth



of girls became more confident and independent because of their trip.



Source: EF Tours for Girl Scouts, Group Leader Evaluations, Summer 2018





## Leadership

90%

of girls were empowered to take an active role throughout their travel experience.

## College Planning

80%

of girls plan to use their travel experience on college applications.



Our trusted  
travel partner

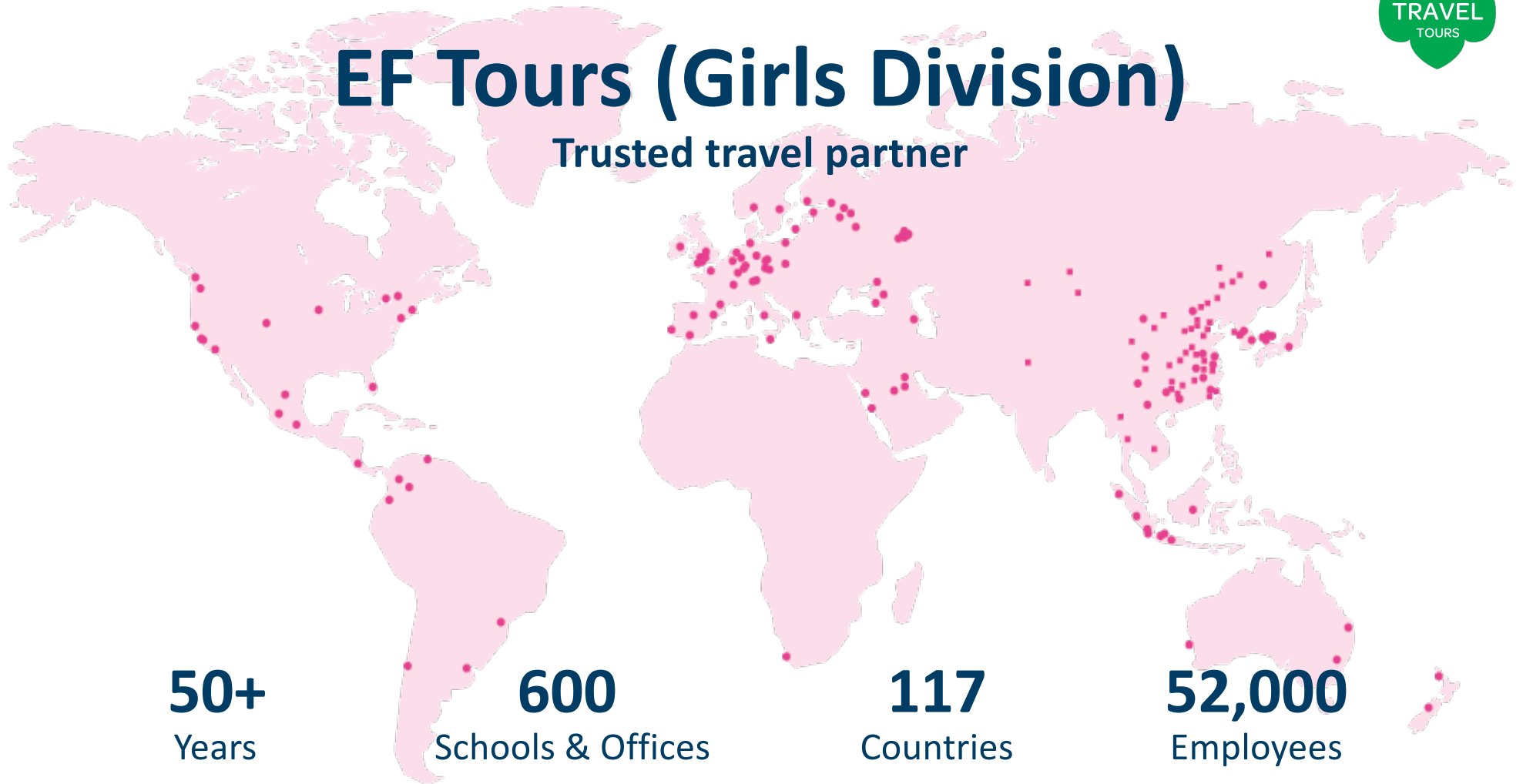






# EF Tours (Girls Division)

Trusted travel partner



**50+**  
Years

**600**  
Schools & Offices

**117**  
Countries

**52,000**  
Employees



# Educational Resources

Opportunities for young travelers to take the lead



## Field journal

Chronical your experience and reflect on key learnings



## High school and college credit

Earn credit with a personal project



## College applications

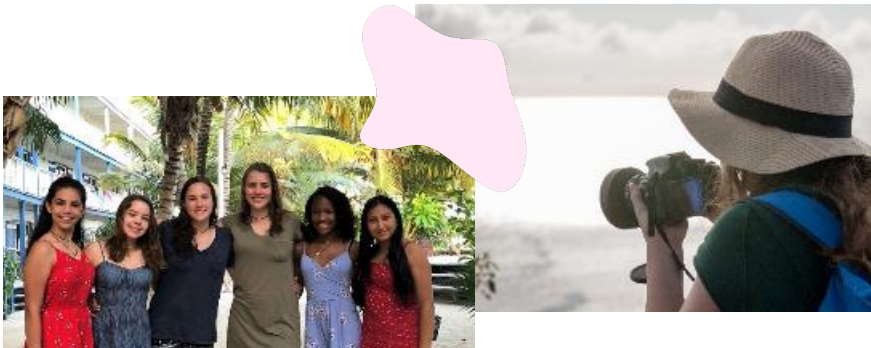
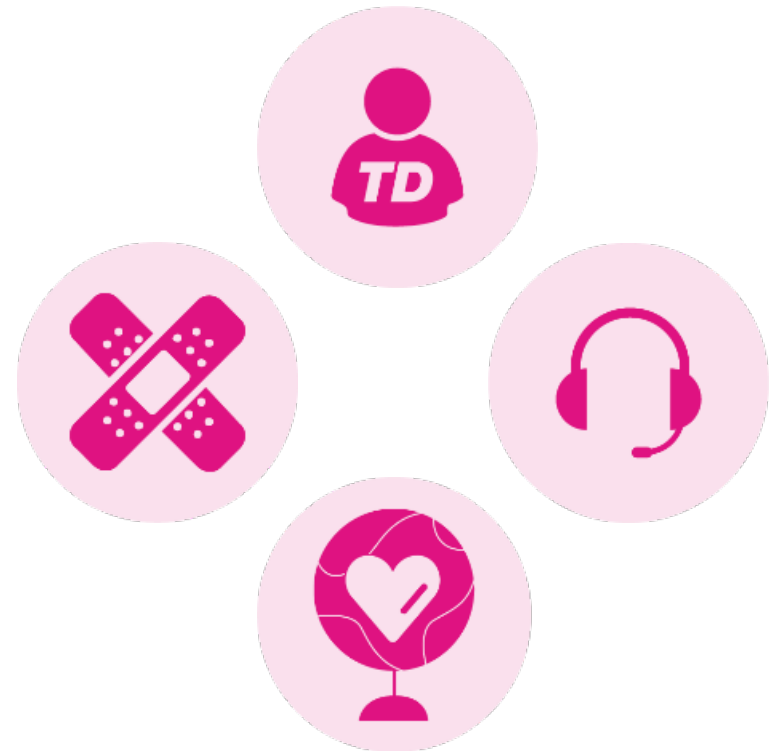
Use your tour to inspire your personal essay





# EF is #1 in safety!

- 24/7 Emergency Service Line
- 24/7 Tour Director
- Travel protection
- Local presence
- Vast international network
- Global monitoring



# They've seen everything, so they're ready for anything



- Peace of Mind policy
  - Flexibility to change our destination or date in the event of unforeseen circumstances
- Global Travel Protection
  - For anything that happens on our tour





# Group Travel

Travel with like-minded people

- Max group size: 42
- Rooming
  - Kids under 20 – triples and quads
  - Adults - twins
- Keeps our tours affordable
- Allows more travelers to see the world
- Enables travelers to make lasting friendships
- Requires tour and departure flexibility
  - Within a few days of departure date requested



A photograph of a traditional Chinese street scene. On the left, a wooden building has a vertical sign that reads "紫光閣毛筆文具發客". A red lantern hangs from the building. In the center, a large white circle contains the text "Let's go to... Beijing, Osaka, Kyoto, Hakone, and Tokyo" in pink, with a pink airplane icon below it. On the right, a stone staircase leads up a hill, flanked by trees and a stone wall. The sky is overcast.

Let's go to...  
**Beijing, Osaka,  
Kyoto, Hakone,  
and Tokyo**

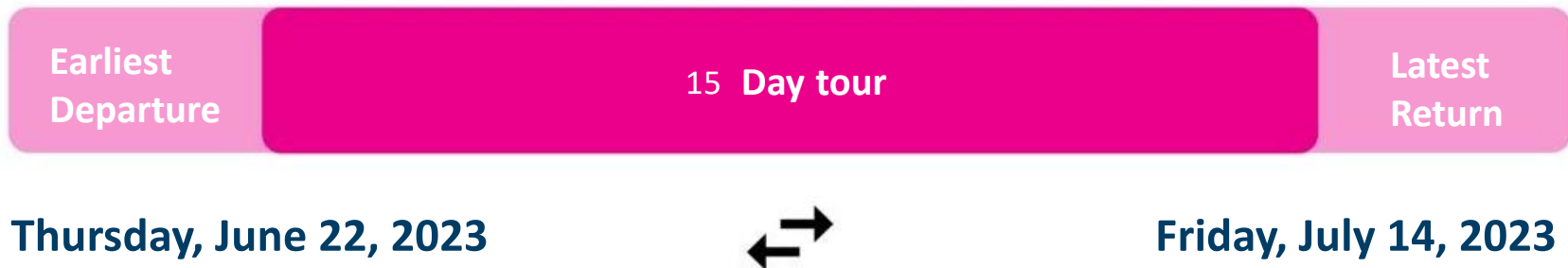
A 15-day tour | China and Japan





# Mark your calendars

We'll be traveling sometime between...



*\*We'll confirm exact departure and return dates closer to tour.*



# Our Itinerary

What we'll see, do, eat, and experience

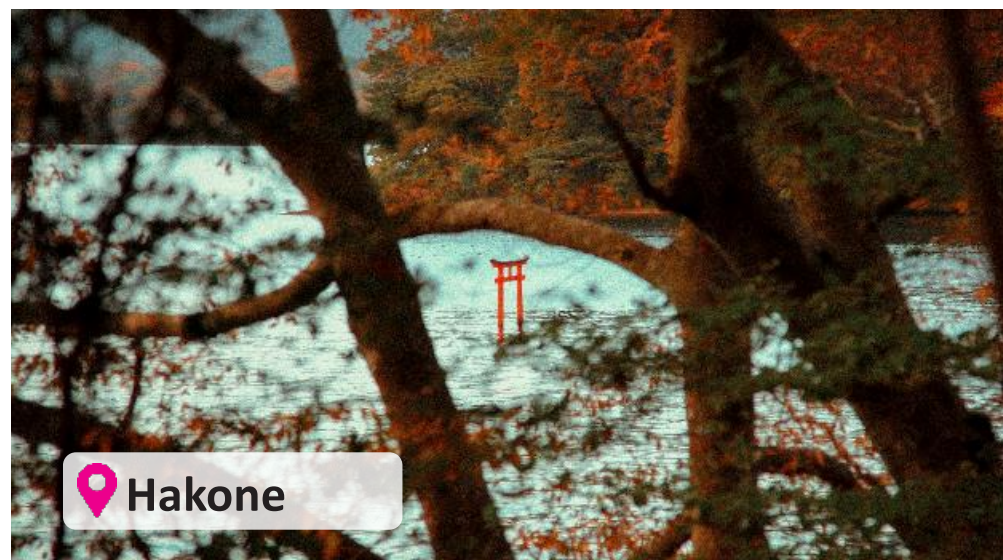
What are  
you excited  
about?







GIRL  
TRAVEL  
TOURS





# Tour highlights

All this and more awaits

- See **Tiananmen Square, Forbidden City, the Imperial Palace, and, the Summer Palace.**
- View one of the wonders of the world: **The Great Wall of China**
- Visit a **tea house** to learn about the importance of tea in the Chinese culture
- Experiences: participate in a morning **tai chi exercise, calligraphy lesson, and an indigo dyeing experience**
- Visit the **Hakone National Park**





# Top 5 Picks

From my customization team

- Seeing this Wonder of the World for the first time: **the Great Wall of China**
- **Canal Street in Otsuka** street foods, colorful ice creams, and lights
- **The Bullet Train** unlike any train experience I've had in the states
- **The Kiyomizu Temple in Kyoto:** learn about why people visit and experience the great views
- **All Things Tokyo:** BIG and modern





# What's Included

- ✈ Round-trip airfare
- 🏨 Safe, quality hotel rooms
- 👤 24/7 bilingual Tour Director
- 🚌 On-tour transportation
- 📖 Educational itinerary
- 📷 Guided tours and activities
- 🍽 Breakfast and dinner daily
- 🛡 24/7 on-tour assistance
- 👥 Traveler Support Team
- 💳 Friends & Family payment page
- 📱 weShare online education platform

- 💡 UnCommon App college essay toolkit
- 🎒 Travel backpack

PERK: GTT gives you swag!

## (And a few things you'll need to cover)

- 🌐 Global Travel Protection Plan
- 🌐 Passport and visa fees
- 🧳 Airport baggage fees
- 🍽 Lunches and snacks
- 🎁 Spending money PERK: GTT provides currency
- 💵 Tips PERK: GTT pays for TD and Guide tips







# Pricing

Secure your spot with a \$95 deposit

**\$89**

BI-WEEKLY



**\$178**

MONTHLY



**\$5,955**

IN FULL



FRIENDS &  
FAMILY PAGE



*Adults are welcome! Same easy payment options with total price of **\$6,705***



# Important Details

- **Auto Payment Plan**  
Includes No Risk Cancellation through Feb 2021
- **Manual Payment Plan**  
Subject to Cancellation Fees
- **Insurance**  
Not included in price  
Purchase 6 months before departure
- **Gateway Fees**  
All prices are quoted from PHL departure  
- All other airports will result in price increase



# Available Discounts

- **\$200 Early Enrollment Discount**  
(Amount will come off balance in Fall '20)
- **\$100 Repeat Traveler Discount**  
(For anyone who has been on an EF or GAT in the past)

## Group Benefits

- **Tips/Gratuities**  
(All tips and gratuities will be covered)
- **Some Excursions and Spending Money**  
(Some perks on tour and a bit of spending money in local currency to get you started)





# Who's in?

Enroll at

[eftours.com/ 2401012VW](http://eftours.com/2401012VW)

Call traveler support

800-665-5364

Questions:  
Contact Marah Walsh  
[marahwalsh@gmail.com](mailto:marahwalsh@gmail.com)  
215-208-0293



**Enroll by August  
31st to lock in this  
price!**

**Ask about our  
Risk Free Booking!**



# ***Questions?***

Group Leader:  
***Marah Walsh***  
***marahwalsh@gmail.com***  
***215-208-0293***

[www.girltraveltours.com](http://www.girltraveltours.com)  
[www.facebook.com/groups/girltraveltours/](https://www.facebook.com/groups/girltraveltours/)





# Payment Plans

## ***Option 1: Pay in full at enrollment (free)***

Pay the entire balance at the time you enroll.

Payment methods accepted: Visa or MasterCard, ATM/debit card and personal checks.

## ***Option 2: Automatic Payment Plan (free)***

After you enroll with the \$95 deposit, payments are automatically deducted from your bank account.

Choose your payment frequency:

- Monthly payments based on a preferred date

- Bi-weekly payments on a preferred weekday

- Payments are scheduled until 30 days prior to departure

Payment methods accepted: ATM/debit card or checking account only.

## ***Option 3: Manual Payment Plan (\$50 plan fee)***

Receive invoices and make your payments in less frequent installments.

Payment schedule:

- \$95 deposit due upon enrollment

- \$500 due 30 days after enrollment

- \$500 due 90 days after enrollment

- Remaining balance due 110 days prior to departure

- \$165 Global Protection Plan fee due 6 months before tour

Payment methods accepted: Visa or MasterCard, ATM/debit card and personal checks.





# Manual Payment Plan

If travelers do not pay in full upon enrollment or choose the Automatic Payment Plan, they will be enrolled in the Manual Payment Plan and a non-refundable **\$50 plan fee will be applied**.

- Based on date of enrollment, travelers on an EF Tours for Girl tour will be invoiced up to four payments. The deposit of \$95 is due at the time of enrollment. The first payment of \$300 is due 60 days after enrollment. The second payment of \$500 is due 14 months prior to departure. The third payment of \$500 is due 9 months prior to departure. The remaining balance is due 110 days prior to departure.
- A late fee of \$95 will be assessed for any missed payment. All late fees are non-refundable.
- Travelers can pay with ATM/debit card, credit card (card must display the Visa or MasterCard logo), or personal checks.
- Payments made by personal check must be submitted with the traveler's name and account number.
- A non-refundable \$35 fee will be assessed each time a payment is returned or declined.
- Travelers are responsible for making on-time payments even if an invoice is not received.
- All payment due dates refer to the dates by which each payment must be received by EF.
- EF reserves the right to cancel the traveler's reservation if any payment is past due by 30 days (or 15 days after final payment).
- Payment for the Global Travel Protection plan is due at time of purchase, and the plan will not be purchased until payment is received.







# Cancellation Policy

**150 days or more prior to departure:** Full refund less the \$95 non-refundable deposit, all non-refundable fees, Global Travel Protection, and a \$300 cancellation fee.

– **149 to 110 days prior to departure:** Full refund less the \$95 non-refundable deposit, all non-refundable fees, Global Travel Protection, and a \$500 cancellation fee.

– **109 to 45 days prior to departure:** Full refund less the \$95 non-refundable deposit, all non-refundable fees, Global Travel Protection, and 50% of the program price.

– **44 days or less prior to departure:** No refund will be issued.





# Who is Going?

**26/42 people:** Frequent travelers have already enrolled

## Ages:

- 6 high schoolers
- 5 college aged
- 14 over 40

## Gender:

- 5 males
- 21 females

